

# 1037 CONTAINER LOAD-UNLOAD



## The ideal solution when you need extended reach beyond a single-stage conveyor.

Designed with a compact footprint, this newest addition to our telescopic conveyor family is perfect for efficiently unloading pup trailers, short track trailers, or containers 30 ft. or less.

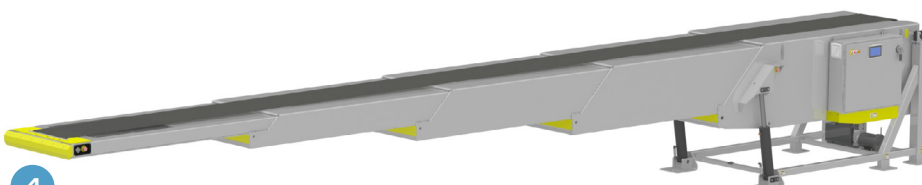
Equipped with intuitive and precise controls, this four-stage telescopic conveyor streamlines loading and unloading operations. It extends up to 27 ft. from the base to the boom's end, ensuring optimal reach. The hydraulic front cylinders enable easy height adjustments, allowing operators to raise or lower the conveyor for more ergonomic and efficient trailer or container handling.

### KEY FEATURES

1. Removable crash plates and end guards on boom
2. Formed side skins
3. HMI Panel
4. Safety bumper stops out motion, retracts away from obstacle

### OPTIONS

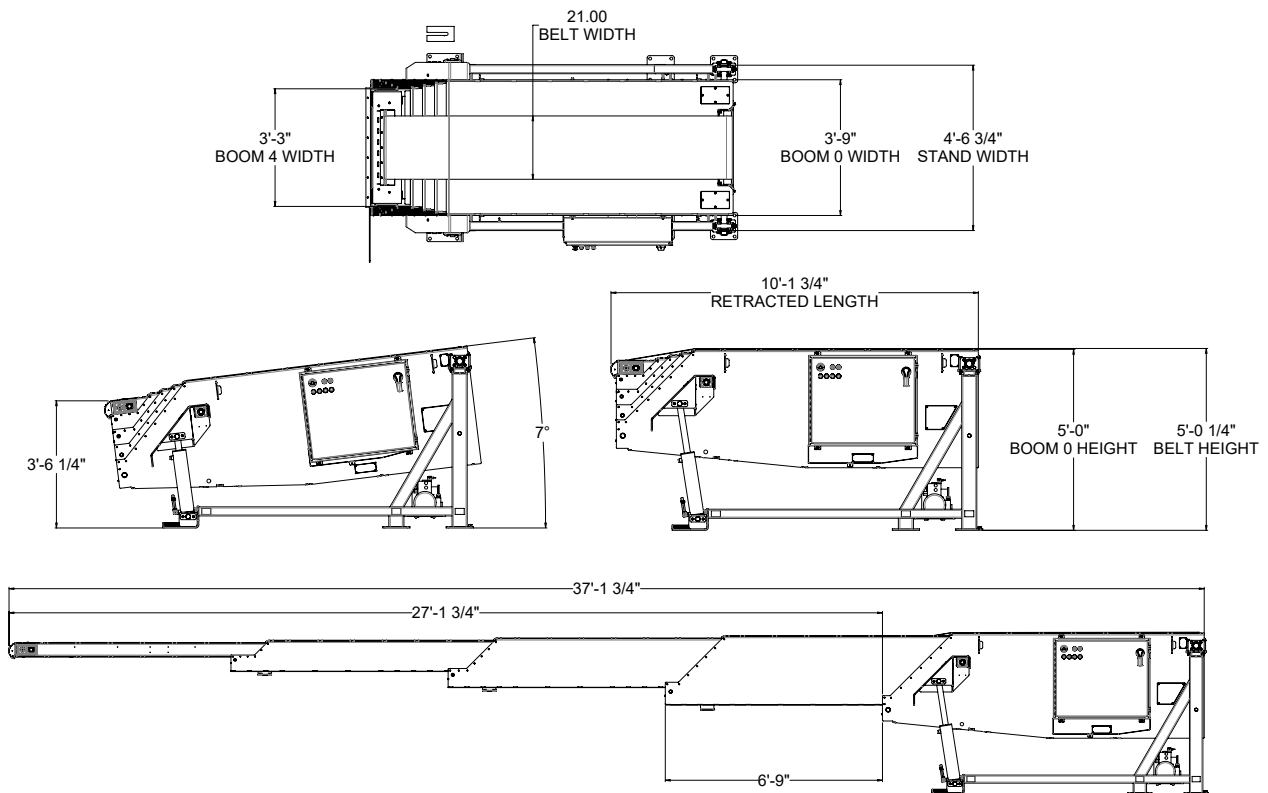
- Skirting
- Package Frame Assembly
- Handrail Assembly
- Maintenance Cord Pendant
- Spare Fuse Kit
- Spacer Kit (Convert Dock-High to Platform Application)
- Dock-High or Platform Configuration



**GET FULL  
PRODUCT  
INFO**

# SPECIFICATIONS

<b>Overall Length</b>	37 ft.	<b>Electrical Control Panel</b>	U.L. Panel w/ Schnieder PLC with open I/O's Altivar VFD's for belt drive and boom extension. Rotary Disconnect, Mushroom E-Stop.
<b>Boom Extension Length</b>	27 ft.	<b>Enclosure Mount</b>	Right/left hand, remote
<b>Retracted Length</b>	10 ft. (2 in. overhand with bumper)	<b>Boom Controls</b>	4-way up/down/in/out, belt on/off
<b>Machine Base Width</b>	3 ft. 9 in.	<b>Boom Extension Drive</b>	3/4 HP Sumitomo, VFD Controlled
<b>Discharge Elevation</b>	5 ft. to 5 ft. 9 in. field welded	<b>Belt Drive</b>	3 HP Van der Graaf Motorized Pulley, VFD Controlled
<b>Capacity</b>	50 lbs./linear ft.	<b>Belt Width</b>	21 in.
<b>Power Supply</b>	480 V, 3-phase, 24 VDC controls	<b>Belt Direction</b>	Unload only or Load/Unload
<b>Hydraulic Power Supply</b>	3 HP, 480 V, dual-speed lowering/variable speed raise	<b>Belt Speed</b>	Multiple speeds up to 100 ft./min
<b>Stand</b>	Dock-high or platform-high		



**A world leader in airline, air cargo and material handling equipment for over 45 years.**

FAST Global Solutions designs, builds, installs and services an expansive portfolio of robust, ruggedly-built, dependable equipment for today's global commerce operations. To learn more, contact the knowledgeable and experienced FAST Team.

[conveyorsales@fastsolutions.com](mailto:conveyorsales@fastsolutions.com) +1 (320) 634-5126 [fastsolutions.com](http://fastsolutions.com)