

# ALPHACART™



## Strong. Durable. Corrosion-resistant.

The FAST Alpha Cart sets a new standard in design solutions for ground support equipment. Engineered with rotomolded construction for strength and durability, the Alpha Cart also has less weight to reduce wear and tear. The interlocking framework design allows for easy repairs or replacement and includes specific features that will enhance operator safety and performance.

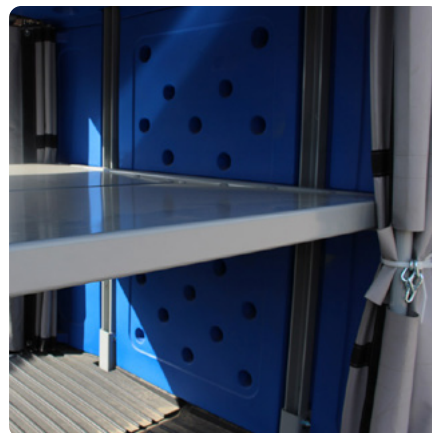
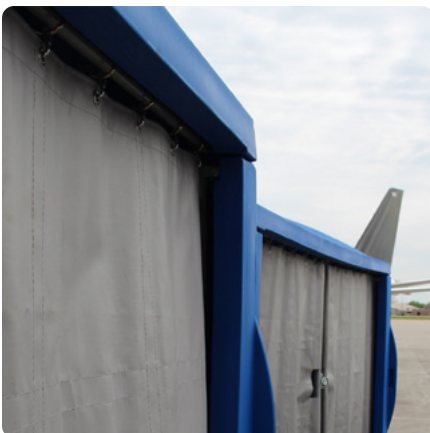
Alpha Cart is patent pending.

## KEY FEATURES

1. Interlocking sections for quick repair and replacement
2. Easy fleet connection and inline towing with common FAST running gear
3. Side-pull handles to eliminate excess wear and tear on curtains and for easier baggage handler operation
4. Vinyl curtains with webbed reinforcement to protect baggage from elements
5. Ergonomically corrugated floor to reduce baggage drag and move moisture away
6. Rotomolded construction for strength, durability and corrosion resistance.

## OPTIONS

- Bolt-in middle shelf to manage baggage placement



**GET FULL  
PRODUCT  
INFO**

## SPECIFICATIONS

<b>Capacity</b>	8,000 lbs. (3,629 kg)	<b>Bed Panel</b>	High-density polyethylene; ergonomic corrugated floor with drainage channeled to the center
<b>Weight</b>	1,489–1,650 lbs. (675–748 kg)	<b>Towbar</b>	42 in. long (106 cm) with 3 in. lunette (7 cm)
<b>Steering</b>	Fifth-wheel type with bearing pivot	<b>Curtains</b>	Vinyl with webbed reinforcement
<b>Hubs</b>	5-bolt, 4.5 in. (11 cm) bolt circle hubs with 1.375 in. (3 cm) tapered roller bearings	<b>Length</b>	129.7 in. (329 cm) towbar up, 169.2 in. (430 cm) towbar down
<b>Rear Hitch</b>	Spring-loaded E-hitch; additional options available	<b>Width</b>	70.22 in. (178 cm)
<b>King Pin</b>	2 in. (5 cm) diameter stress-proof with sealed bearings	<b>Height</b>	81.3 in. (207 cm) overall, 24.75 in. (63 cm) bed
<b>Brakes</b>	Manual towbar-activated front wheel brakes	<b>Tires</b>	Solid 4 x 8 in. (10 x 20 cm), 3-stage solid
<b>Top and Side Panels</b>	High-density polyethylene	<b>Running Gear</b>	Rigid mount or four-wheel independent torsion axles



**A world leader in airline, air cargo and material handling equipment for over 45 years.**

FAST Global Solutions designs, builds, installs and services an expansive portfolio of robust, ruggedly-built, dependable equipment for today's global commerce operations. To learn more, contact the knowledgeable and experienced FAST Team.

[GSE@fastsolutions.com](mailto:GSE@fastsolutions.com) +1 (320) 634-5126 [fastsolutions.com](https://fastsolutions.com)